

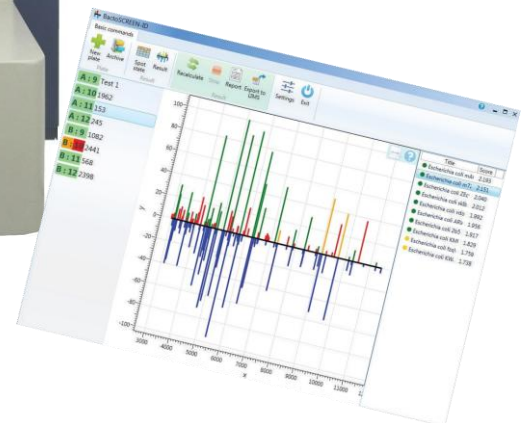
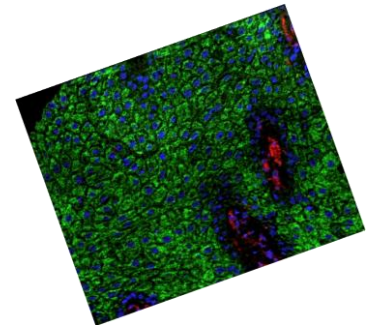
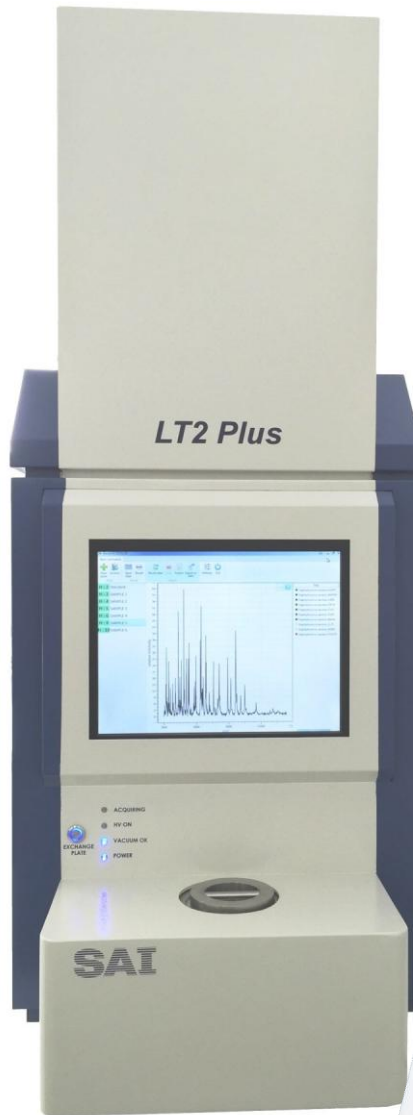
LaserToF LT2 Plus

Benchtop Linear MALDI-ToF Instrument

- Linear ToF mass analyser
- 96 well microtitre sample plates
- Pulsed Extraction
- Sample viewing camera
- Touchscreen integrated PC
- Custom Experiment Profiles
- Stratified User Access
- Automated sequencing
- Small Footprint
- Cost Effective and User Friendly
- Options
 - Imaging
 - Polymer Analysis
 - Microbiology database ID
 - External PC

SAI's LaserToF LT2 Plus is a completely automated, compact and versatile Matrix Assisted Laser Desorption Ionisation Time of Flight (MALDI-ToF) mass spectrometer. The instrument is designed for the rapid and accurate analysis of a wide variety of biomolecules such as peptides, proteins and oligonucleotides. The LT2 Plus is also suitable for the analysis of industrial polymers as used in the petroleum and chemical additive industries. Operating exclusively in linear mode, the LT2+ is ideal for creating mass profile fingerprints for whole cell samples allowing for the creation of protein expression profiles for cells and microbes. The use of whole cell samples dramatically reduces sample preparation time compared with other techniques for protein expression analysis.

The mass spectrometer includes advanced acquisition and control electronics, is easy to calibrate and is highly stable for optimum precision in a wide variety of measurements. The fast electron multiplier detection system has a long lifetime, needs minimal maintenance and provides the system with high gain, linear and large dynamic range performance.



Product Note

P100

www.saiman.co.uk

MASS SPEC

SIMS

MALDI MS

AMBIENT MS

BESPOKE SERVICES

LaserToF LT2 Plus



Specifications

Specification	Performance
Mass Resolution	> 2,500 m/Δm (Δm=FWHM)
Mass Range	> 500,000
Mass Accuracy	< 100 ppm with internal calibration RMS < 500 ppm with external calibration RMS
Vacuum	Air-cooled TMP backed by oil free diaphragm pump
Sensitivity	< 1 f mol
Laser radiation	Pulsed UV (N ₂ 337nm)
Dimensions [Weight]	52x83x130 (WxDxH cm) [approx. 130 kg] (figures exclude any external computer supplied)
Services (power only)	<1kVA (excluding computer), single phase
Motorized Sample Stage	96 well 1/4 microtitre plates (stainless steel reusable)
Data System	PC, Windows, integral (with touchscreen) or external
Software	Full MS control and sequenced data acquisition, network, web or local database access with processing
<i>Environmental</i>	
Temperature range	15-25C

Product Note

P 100

www.saiman.co.uk



RELATED PRODUCTS

LaserToF LT3+ P101
LaserToF TT P102



EXAMPLE APPLICATIONS

- BIOLOGICAL IMAGING
- FAST ID OF BACTERIA, & FUNGI
- BIOMOLECULE ANALYSIS
- POLYMER ANALYSIS
- PROTEOMICS



LOCAL REPRESENTATION

Distributed in Europe by



T: +31 681 03 83 06
E: sales@albasci.com
W: www.albasci.com

MASS SPEC

SIMS

MALDI MS

AMBIENT MS

BESPOKE SERVICES