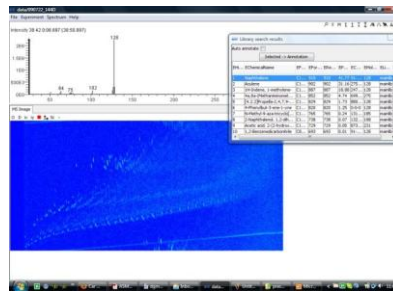


Kronus SA

ToF-MS add on for most GCs

- Orthogonal extraction ToF
- Interfaces to most GCs
- High performance MSD upgrade
- Inbuilt heated transfer line control
- GC compatible control software
- Quick plug in EI and CI sources
- Custom Experiment Profiles
- Auto / manual tune
- High sensitivity and duty cycle
- NIST DB compatible
- GCxGC ready
- Full scan and SIM capable
- Autocalibration



Kronus SA



Specifications

Specification	Performance
Mass Resolution	> 1,200 m/Δm (Δm=FWHM @ 500m/z)
Mass Range	2 - 1,200 m/z
Measurement modes	Full Scan or Single Ion Monitoring (SIM)
Vacuum	2 air-cooled TMPs backed by a 2 stage rotary pump
Sensitivity	1 pg OFN (octafluoronaphthalene) at S/N> 100/1
Scan Rate	Up to 100 scan/sec written to disk
Dimensions [Weight]	20x50x46 (WxDxH cm) [approx. 20 kg] (figures exclude computer)
Services (power only)	<1kVA (excluding GC unit), single phase
Ion Sources	EI , CI
Data System	Network ready PC running Windows.
Software	Full control of MS, GC and autosamplers. Sequenced data acquisition and reduction program with report generation and NIST library integration.
<i>Environmental</i>	
Temperature range	15-25C

Product Note

P 301

www.saiman.co.uk



EXAMPLE APPLICATIONS

- FAST GC
- 2D GC (with modulator)
- PESTICIDES
- PETROLEUM PRODUCTS
- WARFARE AGENTS
- AIR POLLUTANTS
- FORENSICS
- PYROLYSATES
- SOILS & SEDIMENTS

LOCAL REPRESENTATION

Distributed in Europe by



T: +31 681 03 83 06
E: sales@albasci.com
W: www.albasci.com

MASS SPEC

SIMS

MALDI MS

AMBIENT MS

BESPOKE SERVICES