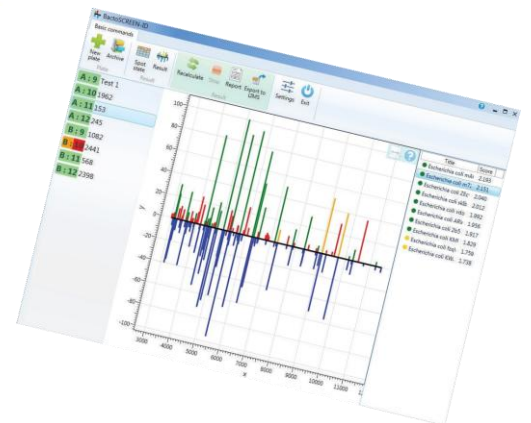
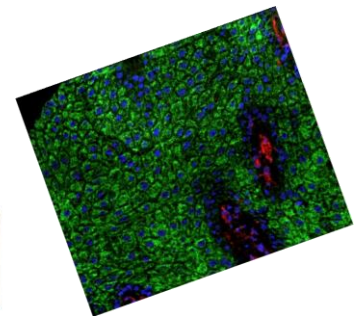


LaserToF LT3 Plus

High Performance Benchtop MALDI-ToF

- Reflectron & Linear MALDI ToF
- Dual Detectors
- Pulsed Extraction
- Sample viewing camera
- 96 well microtitre sample plates
- Custom Experiment Profiles
- Stratified User Access
- Automated sequencing
- Small Footprint
- Cost Effective and User Friendly
- Options
 - Imaging
 - Polymer Analysis
 - Microbiology database ID

SAI's LaserToF LT3 Plus is a completely automated, compact and versatile Matrix Assisted Laser Desorption Ionisation Time of Flight (MALDI-ToF) mass spectrometer. The instrument is designed for the rapid and accurate analysis of a wide variety of biomolecules such as peptides, proteins and oligonucleotides. The LT3 Plus is also suitable for the analysis of industrial polymers as used in the petroleum and chemical additive industries. Operating in linear mode, the LT3+ is ideal for creating mass profile fingerprints for whole cell samples allowing for the creation of protein expression profiles for cells and microbes. The use of whole cell samples dramatically reduces sample preparation time compared with other techniques for protein expression analysis. Operating in reflectron mode provides the user with much superior mass resolution (ca. 10x) for peptides and other smaller molecules offered for analysis. The mass spectrometer includes advanced acquisition and control electronics, is easy to calibrate and is highly stable for optimum precision in a wide variety of measurements. The fast electron multiplier detection system has a long lifetime, needs minimal maintenance and provides the system with high gain, linear and large dynamic range performance. A separate microchannel plate is available when operating in reflectron mode.



Product Note P101 www.saiman.co.uk

LaserToF LT3 Plus



Specifications

Specification	Performance
Mass Resolution	> 10,000 m/Δm (Δm=FWHM reflectron mode) > 2,500 m/Δm (Δm=FWHM linear mode)
Mass Range	> 500,000
Mass Accuracy	< 20 ppm with internal calibration RMS < 100 ppm with external calibration RMS
Vacuum	2 air-cooled TMPs backed by oil free diaphragm pump
Sensitivity	< 1 f mol
Laser radiation	Pulsed UV (N ₂ 337nm)
Dimensions [Weight]	52x83x150 (WxDxH cm) [approx. 170 kg] (figures exclude computer)
Services (power only)	<1kVA (excluding computer), single phase
Motorized Sample Stage	96 well 1/4 microtitre plates (stainless steel reusable)
Data System	PC running Windows.
Software	Full MS control and sequenced data acquisition, network, web or local database access with processing
<i>Environmental</i>	
Temperature range	15-25C

Product Note

P 101

www.saiman.co.uk



RELATED PRODUCTS

LaserToF LT2+ P100
LaserToF TT P102



EXAMPLE APPLICATIONS

- BIOLOGICAL IMAGING
- FAST ID OF BACTERIA, & FUNGI
- BIOMOLECULE ANALYSIS
- POLYMER ANALYSIS
- PROTEOMICS



LOCAL REPRESENTATION

Distributed in Europe by



ALBA SCIENTIFIC

T: +31 681 03 83 06
E: sales@albasci.com
W: www.albasci.com

MASS SPEC

SIMS

MALDI MS

AMBIENT MS

BESPOKE SERVICES